

Sehr geehrte Damen und Herren,

wir erklären folgend die Zuordnung der Artikel zu der beigefügten Konformitätserklärung.

Lieferant ist:

**Oase Outdoors**

<b>Lieferantenartikelnummer</b>	<b>Movera Artikelnummer</b>
651085	9944098
651084	9944099
651087	9944102

Bad Waldsee, 14. September 2021

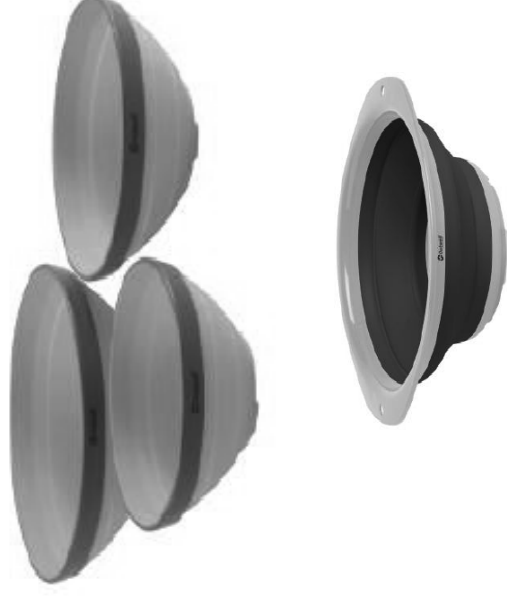


## Declaration of conformity - Food contact material

We herewith declare that following products made of TPE & PP plastic with item no.:

### Item numbers:

650112	650954
650113	650955
650114	650956
650352	650957
650353	651084
650354	651085
650681	651086
	651087



are made in conformity with following EU legislation:

EU regulation 1935/2004 on materials and articles intended to come into contact with food  
EU regulation 2023/2006 on good manufacturing practice

The Danish Order no. 681 of 25/05/2020 on materials and articles for food contact  
EU regulation 2011/10 on plastic materials and articles intended to come into contact with food

### **Test conditions / Recommended temperature of use:**

- ✓ 24 hours at 40°C degrees

### **Migration ratio / volume:**

- ✓ 1000 mL / 10.1 dm<sup>2</sup>

### **Tested against following food simulants:**

- ✓ Aqueous food
- ! Fatty food
- ✓ Acidic food
- ✓ Alcoholic food
- ✓ Dry food

**Limitations when using the product:**

- ! Do not use fatty and oil based foods in this product.
- ! Certain drinks and foods can cause discoloration.

**Tested and recommended for following purpose of use:**

- ✓ Suitable for warm attitude towards 40 celcius degrees
- ✓ Dish washer safe

**NOT Suitable for:**

- ! Oven
- ! Microwave
- ! Freezer

**Functional barrier:**

- ✓ No use of multi-layer material

**Test performed:**

- ✓ Overall migration test has been performed in accordance with current legislation. The product complies with the migration limit on 60 mg/kg or 10 mg/dm<sup>2</sup>.
- ✓ Specific migration tests have been performed in accordance with current legislation. The product complies with the specific migration limits.

Should you have any questions, do not hesitate to contact us.

Date:

21-06-2021

Signature:

*Mads P. Madjel*

**OASE**  
OUTDOORS APS

Kornvej 9 7828 Give  
Tlf. 70 22 85 00 - Fax 70 22 85 05

